

Petri Dish

(#10035/10050/10060/10090/10091/10093/10095/10096/10100/10101/10150/10151)

1. Description

SPL Life Sciences provides a large range (35mm to 150 mm) of Petri Dishes for various laboratory purpose. All of the Petri Dishes are made from high quality polystyrene.

2. Features

- ❖ Crystal grade polystyrene
- ❖ Double packaging of 10090 (Cat. No. 10093)
- ❖ External grip for handling (Cat. No. 10035, 10050, 10060, 10101)
- ❖ Gridded bottom count dish (Cat. No. 10095, 10096)

4. Product Range

Cat.No.	Dish Style d x h (mm)	Internal Dimension d x h (mm)	Growth Area (cm ²)	External Grip	Sterile	Packaging
10035	35.00 x 10.00	35.00 x 9.60	9.4	+	+	20 / 500
10050	50.00 x 15.00 (Non Airvent)	48.76 x 11.80	19.6	+	+	20 / 500
10060	60.00 x 15.00	52.80 x 12.80	21.5	+	+	20 / 500
10090	90.00 x 15.00	85.90 x 12.60	57.5	-	+	10 / 500
10091	90.00 x 20.00	86.20 x 17.70	58.0	-	+	10 / 200
10093	90.00 x 15.00	85.90 x 12.60	57.5	-	+	10 / 500
10095	90.00 x 15.00 (Grid)	85.72 x 12.64	57.5	-	+	10 / 200
10096	90.00 x 15.00 (Quadrant Grid)	85.72 x 12.64	57.5	-	+	10 / 500
10100	100.00 x 15.00	96.40 x 13.75	72.3	-	+	10 / 500
10101	90.00 x 20.00	87.48 x 16.40	60.8	+	+	10 / 200
10150	150.00 x 20.00	138.50 x 15.40	148.0	-	+	10 / 120
10151	150.00 x 25.00	138.57 x 23.30	148.0	-	+	5 / 120

5. Certification

SPL Life Sciences hereby certifies that the product identified above, inspected to be in compliance with product quality specification and requirements as documented in our ISO 9001:2008 Quality Management System (K-QA-Q031478) in Korea.

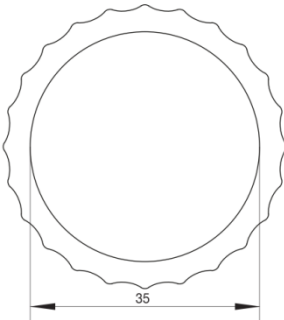
6. Specifications & Technical Drawing

(1) Petri Dish Ø35 (# 10035)

- Specifications

Dimensions		Material (Resin)	Packaging
Lid	Dish		
Diameter: 40.30 mm Height: 6.00 mm	Inner Diameter : 35.00 mm Inner Height : 9.60 mm Growth Area: 9.40 cm ²	Crystal-grade polystyrene (PS)	<ul style="list-style-type: none"> • Pieces/Sleeve: 20 • Pieces/Case: 500

- Technical Drawing

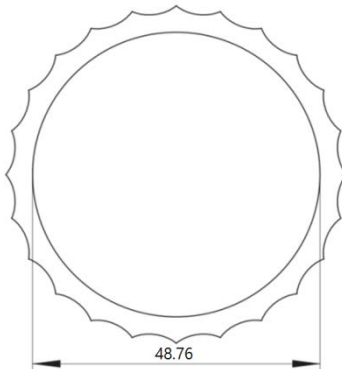


(2) Petri Dish Ø50 Non Airvent (# 10050)

- Specifications

Dimensions		Material (Resin)	Packaging
Lid	Dish		
Diameter: 55.30 mm Height: 7.50 mm	Inner Diameter : 48.76 mm Inner Height : 11.80 mm Growth Area: 19.60 cm ²	Crystal-grade polystyrene (PS)	<ul style="list-style-type: none"> • Pieces/Sleeve: 20 • Pieces/Case: 500

- Technical Drawing

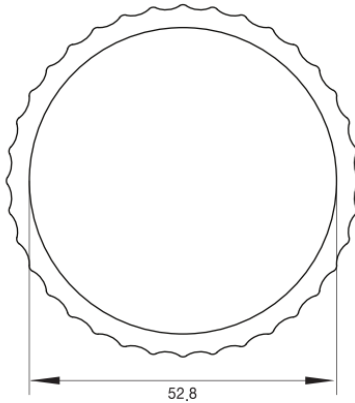


(3) Petri Dish Ø60 (# 10060)

- Specifications

Dimensions		Material (Resin)	Packaging
Lid	Dish		
Diameter: 58.00 mm Height: 8.50 mm	Inner Diameter : 52.80 mm Inner Height : 12.80 mm Growth Area: 21.50 cm ²	Crystal-grade polystyrene (PS)	<ul style="list-style-type: none"> ▪ Pieces/Sleeve: 20 ▪ Pieces/Case: 500

- Technical Drawing

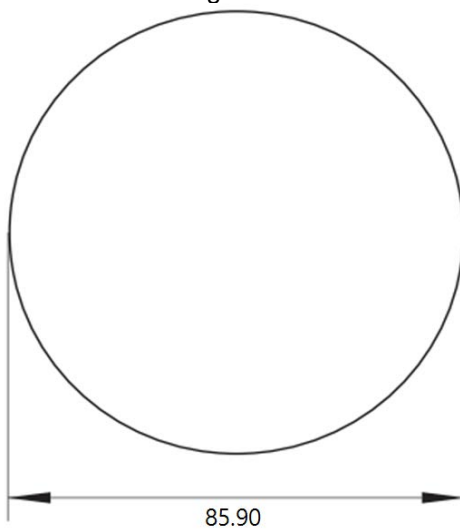


(4) Petri Dish Ø90 (# 10090/10093)

- Specifications

Dimensions		Material (Resin)	Packaging
Lid	Dish		
Diameter: 92.40 mm Height: 8.76 mm	Inner Diameter : 85.90 mm Inner Height : 12.60 mm Growth Area: 57.50 cm ²	Crystal-grade polystyrene (PS)	10090 Pieces/Sleeve : 10 Pieces/Case : 50 10093 Pieces/Sleeve : 10 Pieces/Case : 500

- Technical Drawing



SPL-TDS-PED

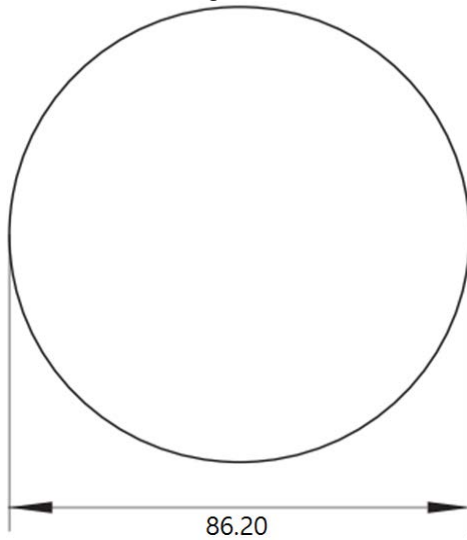
For Research Use Only. Not intended for use in diagnostic or therapeutic procedures.
© SPL Life Sciences Co., Ltd., Version 4, July 7th, 2016

(5) Petri Dish Ø90 (# 10091)

- Specifications

Dimensions		Material (Resin)	Packaging
Lid	Dish		
Diameter: Height:	93.10 mm 9.30 mm	Crystal-grade polystyrene (PS)	<ul style="list-style-type: none"> • Pieces/Sleeve: 10 • Pieces/Case: 200
	Inner Diameter : Inner Height : Growth Area:		86.20 mm 17.70 mm 58.00 cm ²

- Technical Drawing

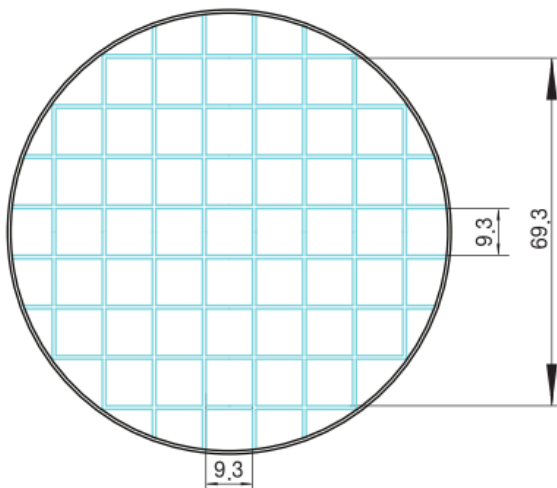


(6) Petri Dish Ø90 Grid (# 10095)

- Specifications

Dimensions		Material (Resin)	Packaging
Lid	Dish		
Diameter: Height:	93.10 mm 9.30 mm	Crystal-grade polystyrene (PS)	<ul style="list-style-type: none"> • Pieces/Sleeve: 10 • Pieces/Case: 200
	Inner Diameter : Inner Height : Growth Area:		85.72 mm 12.64 mm 57.50 cm ²

- Technical Drawing



SPL-TDS-PED

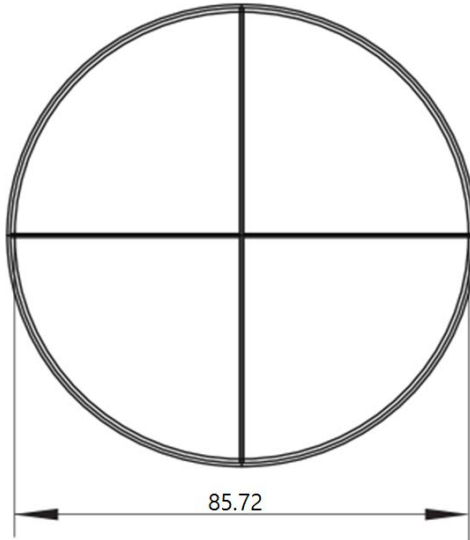
For Research Use Only. Not intended for use in diagnostic or therapeutic procedures.
© SPL Life Sciences Co., Ltd., Version 4, July 7th, 2016

(7) Petri Dish Ø90 Quadrant Grid (# 10096)

- Specifications

Dimensions		Material (Resin)	Packaging
Lid	Dish		
Diameter: 93.10 mm Height: 9.30 mm	Inner Diameter : 85.72 mm Inner Height : 12.64 mm Growth Area: 57.50 cm ²	Crystal-grade polystyrene (PS)	<ul style="list-style-type: none"> • Pieces/Sleeve: 10 • Pieces/Case: 500

- Technical Drawing

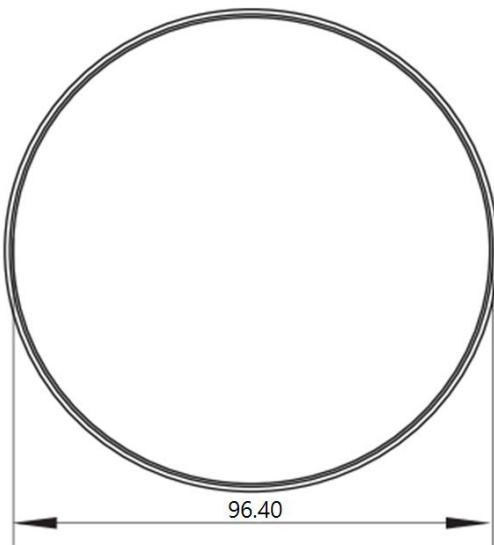


(8) Petri Dish Ø100 (# 10100)

- Specifications

Dimensions		Material (Resin)	Packaging
Lid	Dish		
Diameter: 102.20 mm Height: 8.85 mm	Inner Diameter : 96.40 mm Inner Height : 13.75 mm Growth Area: 72.30 cm ²	Crystal-grade polystyrene (PS)	<ul style="list-style-type: none"> • Pieces/Sleeve: 10 • Pieces/Case: 500

- Technical Drawing



SPL-TDS-PED

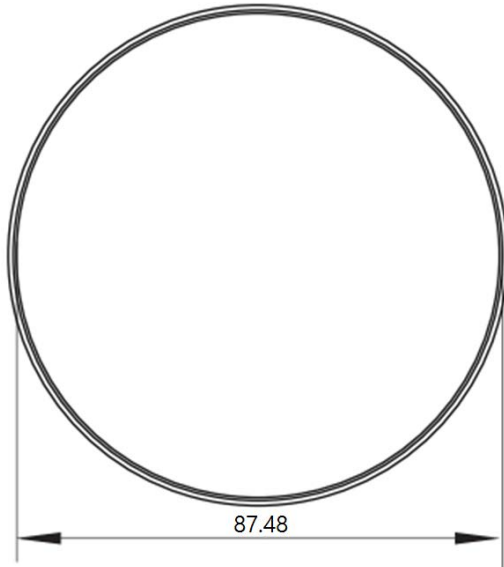
For Research Use Only. Not intended for use in diagnostic or therapeutic procedures.
© SPL Life Sciences Co., Ltd., Version 4, July 7th, 2016

(9) Petri Dish Ø100 Grip (# 10101)

- Specifications

Dimensions		Material (Resin)	Packaging
Lid	Dish		
Diameter:	95.67 mm	Crystal-grade polystyrene (PS)	<ul style="list-style-type: none"> • Pieces/Sleeve: 10 • Pieces/Case: 200
Height:	11.30 mm		
	Inner Diameter : 87.48 mm Inner Height : 16.40 mm Growth Area: 60.80 cm ²		

- Technical Drawing

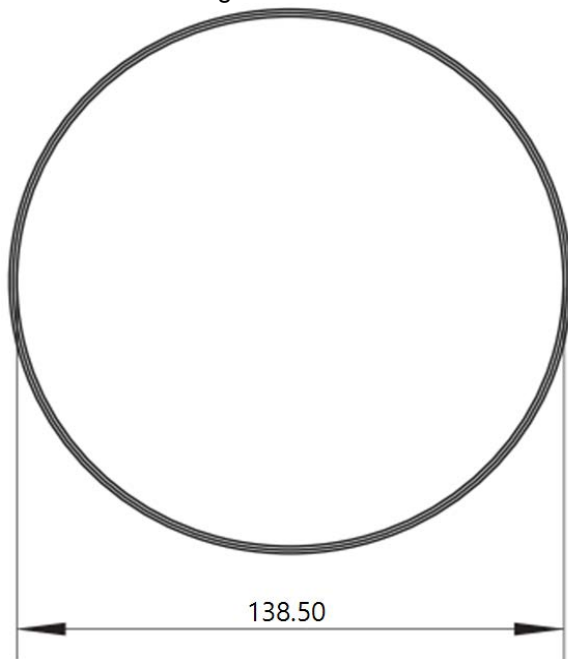


(10) Petri Dish Ø150 (# 10150)

- Specifications

Dimensions		Material (Resin)	Packaging
Lid	Dish		
Diameter:	147.66 mm	Crystal-grade polystyrene (PS)	<ul style="list-style-type: none"> • Pieces/Sleeve: 10 • Pieces/Case: 120
Height:	10.20 mm		
	Inner Diameter : 138.50 mm Inner Height : 15.40 mm Growth Area: 148.00 cm ²		

- Technical Drawing



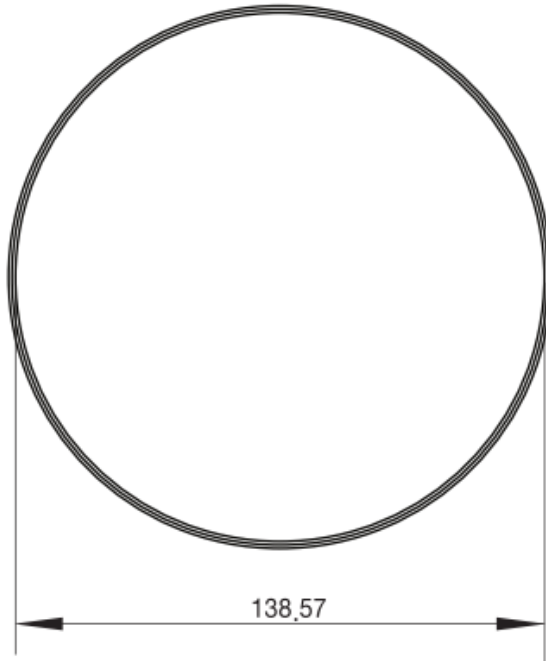
SPL-TDS-PED

(11) Petri Dish Ø150 High (# 10151)

- Specifications

Dimensions		Material (Resin)	Packaging
Lid	Dish		
Diameter: 148.50 mm Height: 12.20 mm	Inner Diameter : 138.57 mm Inner Height : 23.30 mm Growth Area: 148.00 cm ²	Crystal-grade polystyrene (PS)	<ul style="list-style-type: none"> ▪ Pieces/Sleeve: 5 ▪ Pieces/Case: 120

- Technical Drawing



www.spllifesciences.com

For technical assistance, contact SPL R&D Center at:

Tel: +82-31-533-4800; Fax: +82-31-533-1430; e-mail: spl@ispl.co.kr

To place an order, contact your local distributor or

Tel: +82-31-533-4800; Fax: +82-31-533-1430; e-mail: business@ispl.co.kr

SPL-TDS-PED

For Research Use Only. Not intended for use in diagnostic or therapeutic procedures.
© SPL Life Sciences Co., Ltd., Version 4, July 7th, 2016